



Widcombe Community Hall CIO
charity number 1182621

HELP BUILD A NEW COMMUNITY HALL FOR WIDCOMBE!

Charity of the Year at the 2023 Widcombe Fair

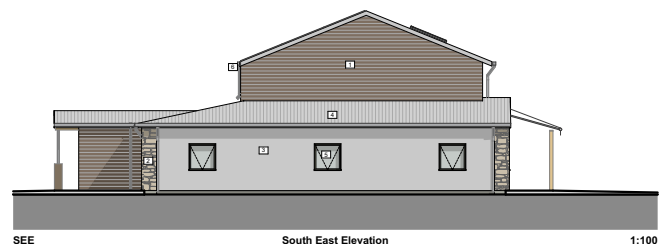
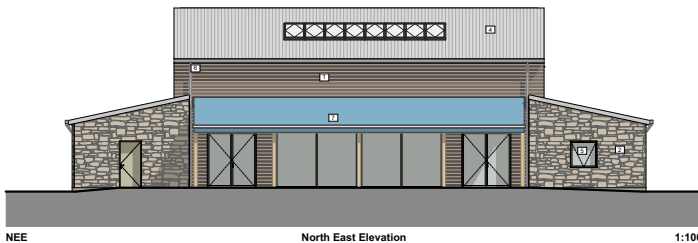
www.widcomecommunityhall.org

Widcombe-in-the - Moor needs a new community hall.

The existing church hall, a listed National Trust building, while beautiful and historic, is sadly inaccessible, dark and expensive to run. After consultation with the local community revealing extensive enthusiasm and support, a handful of local trustees have come together to build a new hall.

PLANNING SECURED

Planning permission was secured in June 2020 to build a multi-purpose centre in the heart of Widcombe, just opposite the new local housing. The Hayes Field was generously sold to the Community Interest Organisation for a nominal £1 by Richard and Valerie Casey. This eco-friendly, accessible building will provide a new home for the local pre-school, and facilitate community-based activities, business meetings, leisure pursuits, fitness and learning opportunities. It will bring together people of all ages in the heart of our community, both indoors and outdoors.



LOADS OF LOCAL SUPPORT

Numerous local fundraising events - Quiz nights, barn dances, duck races, auction nights, pyramid lunches, a specially made quilt to auction, and many more - have seen us reach over £44,000 to date. Our local fundraising target is £50,000, so we're over 85% of the way!

We have also received a very generous bequest of £150,000, a local donation of £50,000 and generous grants from various organisations including the Norman Family Charitable Trust, Bright Ideas, The Elmgrant Trust and the National Lottery Awards for All fund.

HOW YOU CAN HELP... Over the page



Widecombe Community Hall CIO
charity number 1182621

HELP BUILD A NEW COMMUNITY HALL FOR WIDECOMBE!

Charity of the Year at the 2023 Widecombe Fair

www.widecomcommunityhall.org

WHERE ARE WE NOW?

Major site works have been completed by amazing local volunteers, to create a new access bridge, drain and level the site and set out the hall footprint. An eco-architect has been engaged to finalise our plans, putting us in the position to solicit tenders for the main building contracts. The architect is happy to work with a team of subcontractors meaning that we will be able to engage smaller local specialists and businesses. Once tenders have been submitted we will be in a position to make major grant applications, including to the National Lottery Community Fund. The total cost of building the hall is looking to be about £700,000, so there is still a lot of fundraising work to do!

HOW CAN I HELP?

Join our board of trustees We are looking for people to put their energy into this wonderful project, particularly on the fundraising sub-committee. We are a very friendly group who enjoy meeting once a month, usually on a Monday evening. You don't need particular skills - while fundraising and grant applying experience would be a bonus, enthusiasm and ideas about creating and organising local events are just as important. You can also lend fundraising support without joining the committee if you'd prefer.

Buy a stone in our 'Supporting Wall' For a minimum of £40, but as much as you like, you can have your name engraved on a granite stone by the wonderful Lloyd Mortimore, chief announcer at Widecombe Fair. The stones will be built into the face of the entrance into the hall - a wonderful way to inscribe yourself or a loved one into Widecombe life in perpetuity.

Hold an event or make a donation We have gratefully received funds from personal events, such as open gardens, and always welcome such support. Donations can also be made directly to the charity, as a one-off or by setting up a standing order for regular payments. Don't forget to fill out a Gift Aid form too, if you're eligible, and we'll receive an extra 25% at no extra cost to yourself.

Leave a legacy Join our amazing benefactor by including us in your will. Unrestricted funds like these are enormously beneficial for our project.

Follow us Widecombe Community Hall on Facebook or joining our email mailing list, are great ways to find out what we're up to and lend your support.

WHAT'S IN IT FOR ME?

By supporting Widecombe Community Hall in whatever way you can, you're helping this small rural community to truly thrive. Our new hall will help reduce isolation in older or less mobile people, provide a meeting place for the young, allow locals to gather for yoga, pilates, sports, cinema, gigs and other social events and will create income for the village and even a wedding reception venue for visitors.

You can make a donation through our website – www.widecomcommunityhall.org – or get in touch for other ways to get involved. We'd love to hear from you!

THANK YOU!